



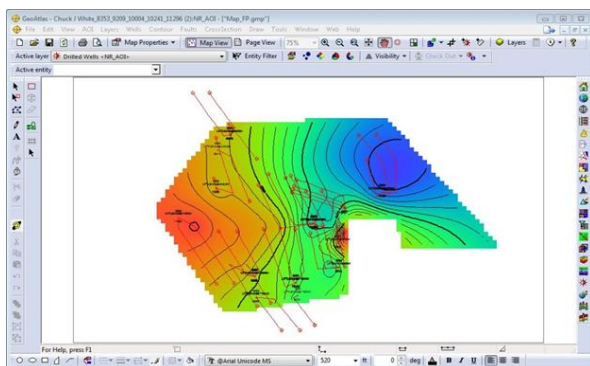
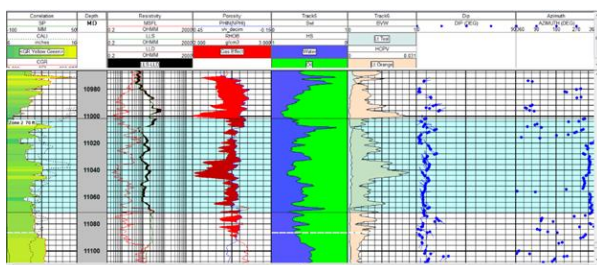
## An advanced, affordable, integrated geoscience system

Apply the latest geoscience technology with GeoGraphix 2016. GeoGraphix 2016.1 is packed with new workflow productivity features, making it the industry's most advanced, cost efficient tightly integrated geoscience system.

- **Performance:** Visualize changes to your interpretation in real time in an upgraded 3D environment
- **Tight Integration:** Enhance subsurface understanding through integrated geological, geophysical & field planning workflows
- **Decision Making:** Make better economic decisions by visualizing all the possibilities in one 3D scene

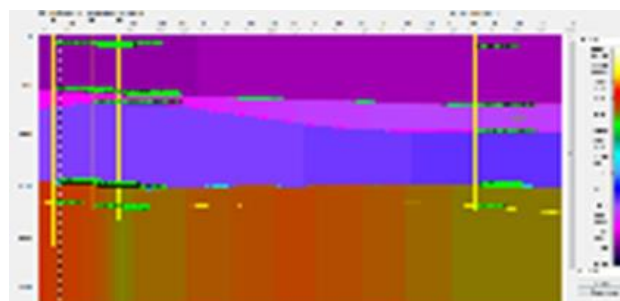
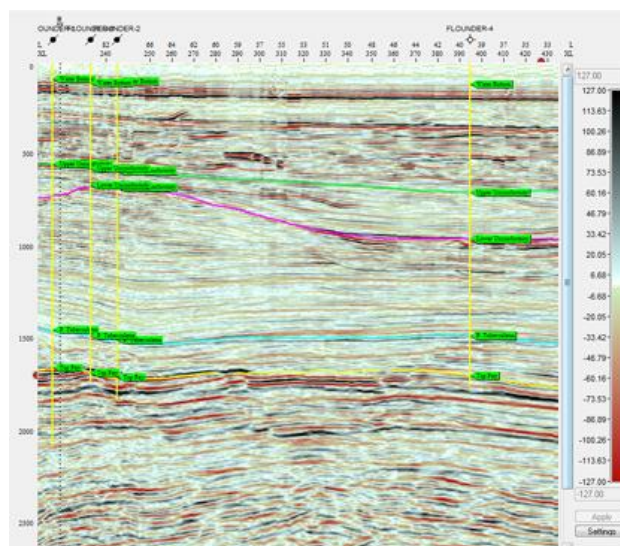
## Geology

- Non-Rectangular AOIs to prevent data duplication and decreased performance caused by overlapping AOIs.
- Dynamically project wells along a line of section by dragging the LOS in map view.
- Create multi-well zone summary reports that account for minimum zone and zone break thicknesses.
- Support for dipmeter data import and display as dip, azimuth and tadpole plots.



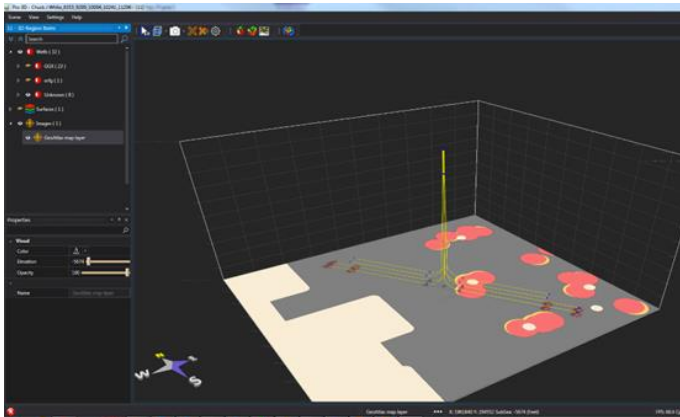
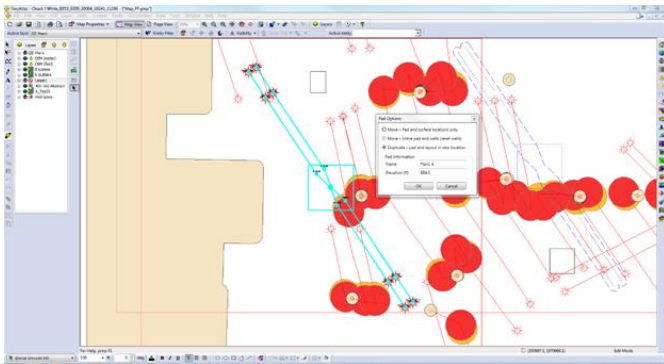
## Geophysics

- Incorporate velocity control points associated with a surface in velocity models.
- Support for templates and opening existing synthetics in SynView



## Field Planning

- Upgraded user interface and improved performance through automatic well pad update option
- Support for planning stacked laterals from a single slot location



## System Requirements

### Hardware (Minimum)

- Core i5/i7 or any Quad Core Processor
- 8 GB RAM
- NVIDIA GeForce or Quadro - 2GB video RAM
- CD-ROM drive
- 19-inch monitor

### Hardware (Recommended)

- Core i5/i7 or any Quad Core Processor
- 16 GB RAM or greater
- NVIDIA GeForce or Quadro - 4GB video RAM
- DVD-RW drive
- Dual 21+-inch monitors

### Software

- Microsoft® .NET 4.5.1
- Microsoft® DirectX 11

### Operating System(s)

- Windows®7 Professional x64
- Windows®7 Enterprise x64
- Windows®7 Ultimate x64
- Windows®10 x64